

TYPE-DESCRIPTION

DEGASING- AND AERATIONSYSTEM TYPE SSD FOR JERRYCANS AND DRUMS

Technical Data:

Material: sintered oleo- and hydrophobe ultra highmolecular HDPE

Chemical Resistanze: against all hazardous liquids

GASFLOW:

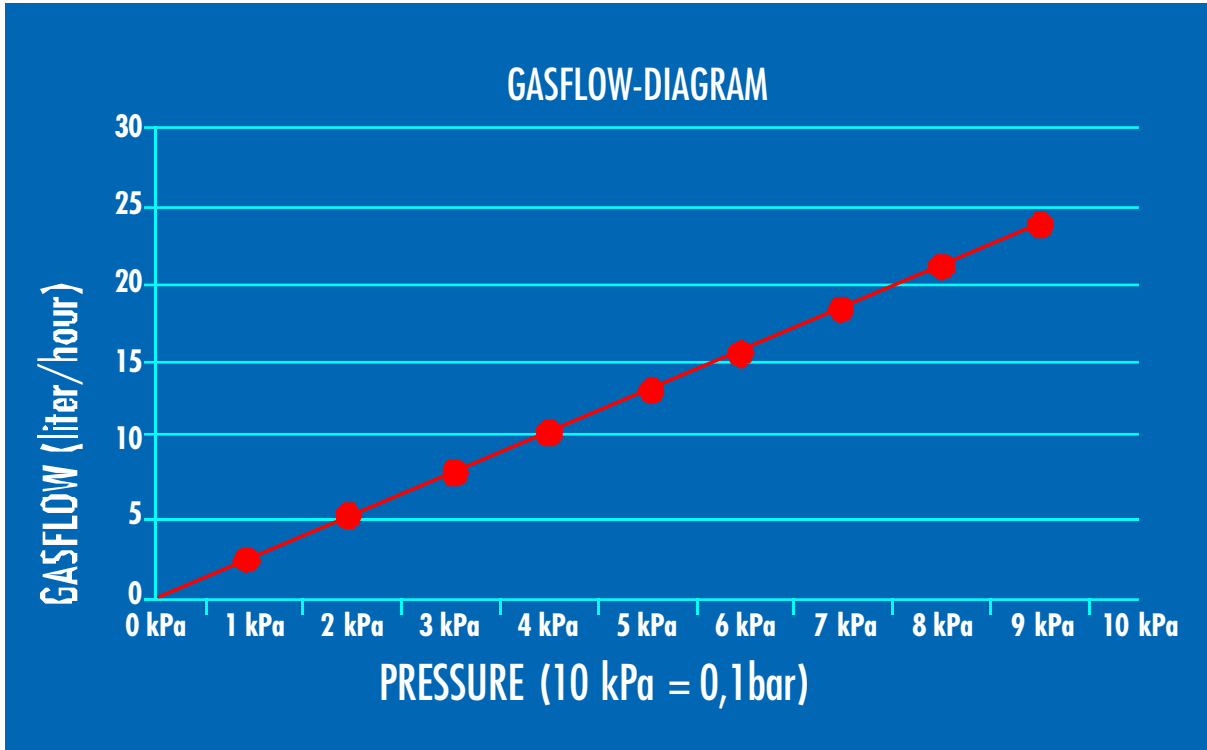
Type SSD > 20 l per hour at ΔP 8 kPa



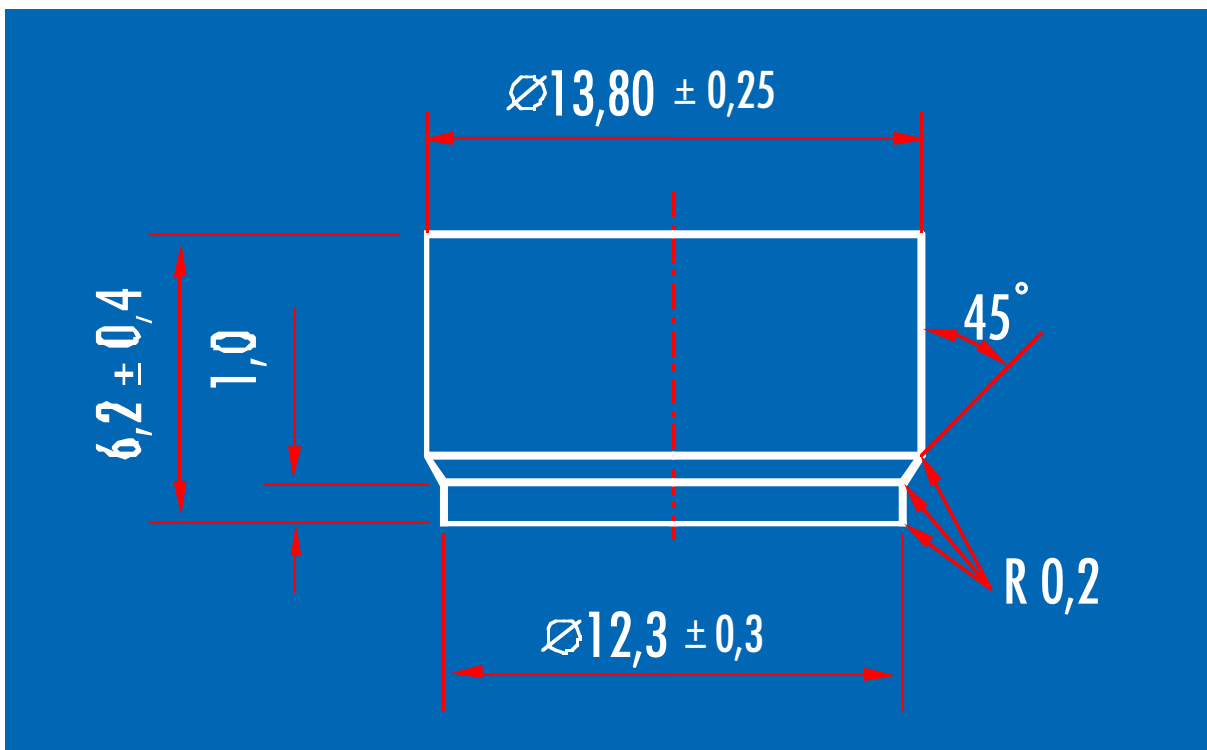
Reduction of gasflow due to contact with the filling-liquid is excluded by the OLEOPHOBIC and HYDROPHOBIC effect of the valve.

The valve can be mounted in ALL CONVENTIONAL degasi-fication-closures for jerrycans and drums.

GASFLOW-CHART



DIMENSIONS IN MM



VALVE-SEAT DIMENSIONS IN MM

